

Call for Papers

Academic Journal, 2025

Dum Dum Motijheel Rabindra Mahavidyalaya

ISSN: 2331-315X

Dum Dum Motijheel Rabindra Mahavidyalaya invites original and unpublished scholarly contributions for the **Academic Journal, 2025 (Vol. 18)**. The journal is a multidisciplinary, double-blind peer-reviewed publication that aims to promote and disseminate academic research across diverse fields of study. This journal abides by the UGC parameters and it has all relevant policies as suggested by UGC.

We welcome contributions from scholars, researchers, and academicians from all disciplines including but not limited to:

- Humanities and Social Sciences
- Commerce and Management
- Natural and Physical Sciences
- Education and Interdisciplinary Studies

Language of Submission:

Only papers written in English will be considered.

Important Dates:

- **Last date for submission:** *August 31, 2025*
- **Notification of acceptance:** *October 30, 2025*
- **Publication Date:** *November 2025*

Author's Guidelines

1. **Manuscript Format:**
 - All submissions must be in **English**.
 - Manuscripts should be submitted in **MS Word (.doc/.docx)** or **LaTeX (.tex)** format.
 - The manuscript should be **typed in Times New Roman, 12-point font**, and **1.5 line spacing**.
 - Use **A4 size paper**, with **1-inch margins** on all sides.
2. **Length of the Paper:**
 - Articles should be between **3000 to 6000 words** (excluding references).
 - A concise **abstract** (150–250 words) and **4–6 keywords** must be provided.
3. **Structure (Follow the template strictly attached hereafter):**
 - Title
 - Author(s) name, affiliation, and email
 - Abstract
 - Keywords
 - Introduction
 - Main body with appropriate subheadings
 - Conclusion
 - References

4. **References & Citation:**

- Follow **the referencing style sheet format attached in the end of** strictly for citations and references.

5. **Originality:**

- The manuscript must be **original, unpublished, and not under consideration** elsewhere.
- All submissions will be screened for **plagiarism**. Submissions with more than **10% similarity** (excluding references) will be rejected.

6. **Review Process:**

- All submissions will undergo **double-blind peer review**.
- The editorial board reserves the right to accept, reject, or suggest modifications to the manuscripts.

7. **Submission Process:**

- Submit your paper via the paper submission portal: **The portal details will be available in the College website from July 15, 2025**
- Subject line: *Submission for Academic Journal 2025 – [Your Name]*

8. **Publication Fee:**

- Publication fee: Rs. 500/- per paper for online version; Rs. 1000/- for print version (One author/joint authors can submit one paper only)

For further inquiries, please contact:

The Editor-in-Chief

Academic Journal, 2025

Dum Dum Motijheel Rabindra Mahavidyalaya

Email: iqacddmrm2015@gmail.com

Website: www.ddmrm.org

(For previous issues please visit the page: https://ddmrm.org/college_publication.html)

Manuscript template

AUTHOR ONE,^{1,†} AUTHOR TWO,^{2,*} AND AUTHOR THREE^{2,†}

¹ Department of X, DDMRM, 2025 Dum Dum Road, Kolkata, WB 700074, India

² Department of Y, DDMRM, 2025 Dum Dum Road, Kolkata, WB 700074, India

[†]These authors contributed equally.

*xyz@ddmrm.org

Abstract: This template contains important information on submissions to DDMRM academic journal. We encourage authors to focus foremost on their content and follow the formatting. Abstract will be concise with 150-250 words. The template is provided as a guide. Note that copyright and licensing information should not be added to your journal.

Keywords: abc, def, ghi, xyz, 4-6 keywords

1. Introduction

We encourage authors preparing submissions to focus foremost on their content and not on formatting. This template is provided as a guide. Each manuscript will be formatted in a consistent way during production.

2. Page layout and length

The manuscript should be typed in Times New Roman, 12-point font, and 1.5 line spacing. Use A4 size paper, with 1-inch margins on top and bottom. Use 1.5-inch margins of left and right side.

Articles should be between 3000 to 6000 words (excluding references).

3. Style

3.1 Title

Use an initial capital for the first word in the title and for proper nouns. Use lowercase following a colon. The title should not begin with “A,” “An,” or “The” or contain the words "first," "new," or "novel."

3.2 Author names

Author names should be styled as follows: first and middle names (given names) or initials followed by surname. Please keep author names consistent from one paper to the next within our publication.

3.3 Author affiliations

Only one single corresponding author may be identified for a manuscript. The corresponding author typically is the person who submits the manuscript and handles correspondence throughout the peer review and publication process. Alternatively, you may choose not to identify a corresponding author and instead use an author note to indicate equal author contributions. Only the corresponding author will have an asterisk attached to their email address. Additional co-author e-mail addresses will have a superscript number in the numerical order of the affiliations.

If all authors share one affiliation, that affiliation should not have a superscript number attached. For multiple affiliations, each affiliation must have a different superscript number in numerical order, and those superscript numbers must be attached to the surname of the authors associated with those affiliations. Each institution must be a separate individual affiliation on a separate line. Do not use abbreviations. Please include the country at the end of the affiliation.

AUTHOR ONE¹ AND AUTHOR TWO^{2,*}

¹ *Department of X, DDMMR, 2025 Dum Dum Road, Kolkata, WB 700074, India*

² *Department of Y, DDMMR, 2025 Dum Dum Road, Kolkata, WB 700074, India*

[†]*These authors contributed equally.*

[*xyz@ddmrm.org](mailto:xyz@ddmrm.org)

Option 1 for an affiliation line with two email addresses (only one for the corresponding author):

3.4 Abstract

Limit the abstract to approximately 150-200 words. Do not include numbered or bulleted lists inside the abstract. **No licensing or copyright statement should appear on the manuscript itself.** 4–6 keywords must be provided after the abstract.

3.5 Section headings

Numbering of section and subsection headings is optional but must be used consistently throughout a paper. When headings are used, the style is as shown in this template, Arabic numbers, with the main section number, followed by a decimal point, and then the subsection number if there is one. Do not include citations to references, figures, or tables in headings.

3.6 Equations

All display equations should be created in Microsoft Equation editor included in Microsoft Word 2013 and later. Inline equations can be created with these tools or by using a keyboard and Unicode characters. Note that LaTeX users can type LaTeX code directly into MathType for rendering in Word. **Please do not submit display math as images.**

4. Figures and tables

4.1 Figures

Figures should be included directly in the document. All figures must be numbered consecutively (i.e., not by section) with Arabic numbers in the order they are cited in the text. The size of a figure should be commensurate with the amount and value of the information conveyed by the figure.

Authors must use one image file per figure that includes all figure parts. Figures must be inserted as objects that are fixed and move with the text, not as floating objects. Figures should never be placed in a table environment, embedded inside the text, or included within a list. All figures should be centered. No part of a figure should go beyond the typing area. Place figures as closely as possible to where they are mentioned in the text. **Be sure to cite every figure.**

The abbreviation “Fig.” for figure should appear first followed by the figure number and a period. For figures that are being reprinted by permission of the publisher, include the permission line required by that publisher in the caption.

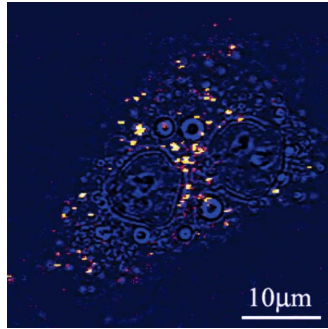


Fig. 1. Sample caption (Ref. [4], Fig. 2). Reprinted with permission from Smith *et al*, Phys. Rev. Appl. **17**(2), 015510 (2024) [46], Copyright 2024 by the American Physical Society.

To meet accessibility requirements, do not rely solely on color to identify elements in figures (such as blue and red curves). Instead, use shapes or other features along with color. For example, you can use dashed and dotted lines, different shapes for data points, text labels pointing to the color features, numbering, etc.

4.2 Tables

Tables should be centered and numbered consecutively in the order they are cited in the paper. Authors must use Word's Table editor to insert tables. **Do not import tables from Excel.** All content for each table should be in a single Word table (do not split content for a single table across multiple Word tables). Use horizontal lines to delimit the top and bottom of the table and column headings. Tables have titles and not captions. If additional explanation of the title or entries in the body of the table is needed, use footnotes below the table body. Position tables as closely as possible to where they are mentioned in the main text.

5. Back matter

5.1 Funding

The funding section should appear immediately after the main. If additional details about a funder are required, include them in the Acknowledgments (see the example below).

Funding. National Institutes of Health; National Science Foundation.

5.2 Acknowledgment

Include acknowledgments at the end of the document. Additional information crediting individuals who contributed to the work being reported, clarifying who received funding from a particular source, or other information that does not fit the criteria for the funding block (name of funder, grant/award number) may also be included. For example, “J. Das thanks the National Science Foundation for help identifying collaborators for this work.”

Acknowledgment. J. Das thanks the National Science Foundation for help identifying collaborators for this work.

6. Author (s) should provide the ‘**no conflict of interest**’ declaration.

Referencing Style sheet Format:

Journal Reference Style Sheet

GENERAL FORMAT RULES

- Font: Times New Roman, 12 pt
- Spacing: Double-spaced throughout (including reference entries)
- Indentation: Hanging indent (0.5 inch) for each entry
- Alphabetization: Entries are ordered alphabetically by the surname of the first author
- Title: References (centered, bold)

BOOKS

Format:

Author Last Name, First Name. *Title of the Book*. Publisher, Year.

Example:

Roy, Arundhati. *The God of Small Things*. Harper Perennial, 2008.

EDITED BOOK CHAPTERS

Format:

Author's Last Name, First Name. "Chapter Title." *Book Title*, edited by Editor First Name Last Name, Publisher, Year, pp. xx–xx.

Example:

Sen, Amartya. "Democracy and Its Global Roots." *Global Justice*, edited by Thomas Pogge, Blackwell, 2005, pp. 24–45.

JOURNAL ARTICLES (PRINT/ONLINE)

Format:

Author's Last Name, First Name. "Article Title." *Journal Name*, vol. #, no. #, Year, pp. xx–xx. DOI/URL (if applicable).

Example (print):

Mukherjee, Ananya. "Labour and Globalization in India." *Economic and Political Weekly*, vol. 52, no. 3, 2017, pp. 23–30.

Example (online):

Sharma, Pooja. "Women in STEM Fields." *International Journal of Gender Studies*, vol. 11, no. 2, 2022, pp. 45–59. <https://doi.org/10.1234/ijgs.v11i2.1234>

WEBSITES

Format:

Author's Last Name, First Name (if known). "Title of Webpage or Article." *Publisher*, Date of publication, URL.

Example:

Kumar, Ravi. "Understanding India's Education Crisis." *India Today*, 5 Jan. 2023, www.indiatoday.in/education-crisis.

NEWSPAPER OR MAGAZINE ARTICLES

Format:

Author's Last Name, First Name. "Article Title." *Newspaper/Magazine Name*, Day Month Year, pp. xx–xx (if available).

Example:

Bose, Mihir. "India's Urban Future." *The Hindu*, 12 Mar. 2022.

THESES & DISSERTATIONS

Format:

Author's Last Name, First Name. Title of Thesis or Dissertation. Type of Work, Institution, Year.

Example:

Das, Rima. *Climate Migration in Eastern India*. PhD Dissertation, Jawaharlal Nehru University, 2021.

IN-TEXT CITATION RULES

- Use author-date style (APA) but signal phrases (MLA-style) are encouraged.

Example (with signal phrase): According to Roy (2008), the narrative of trauma is deeply personal.

Example (without signal phrase): The narrative of trauma is deeply personal (Roy, 2008).

ETIQUETTE FOR MULTIPLE AUTHORS

- 2 authors: List both names joined with "and" in signal phrase, with "&" in parenthetical citation

Example: (Kumar & Shah, 2021)

• 3+ authors: Use et al. after first author

Example: (Chakraborty et al., 2020)